



TUNED Rigs & Ropes
have developed a new
universal deck
fitting for
loops, loop-
blocks and
other rope
applications.

The lightweight,
easy to install and
versatile Loop-Pad
not only looks good, but
also gives you the oppor-
tunity to exchange loops while
keeping the boat watertight!

The Loop-Pad is designed for easy maintenance without
the need for special tools or even specialized personnel.
Spare loops can be taken aboard at minimum weight-cost
to ensure fast damage control during (offshore) racing
and cruising.

Light weight

All Loop-Pads are made of seawater resistant aluminum. The hard-anodized finish ensures good protection from the elements while the aluminum provides light weight compared to the existing stainless steel detachable pad eyes.

No extra links are needed to attach blocks and no fasteners for mounting the Loop-Pad itself.

Sleek design

The Loop-Pad looks sleek both on deck and inside, the round and smooth design fits every racing and cruising yacht.

No bolts, screws or nuts are needed for installation to ensure a clean look on the cabin ceiling.

The Loop-Pad is made of aluminum, then polished and finally hard-anodized in black. To fit the color scheme of the yacht, it is possible to have the Loop-Pads finished in any RAL color.

LOOP PAD

Easy installation/ retrofit

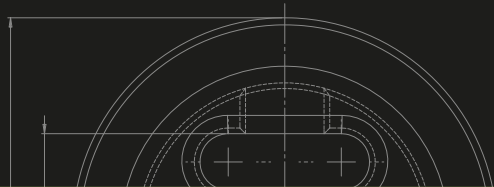
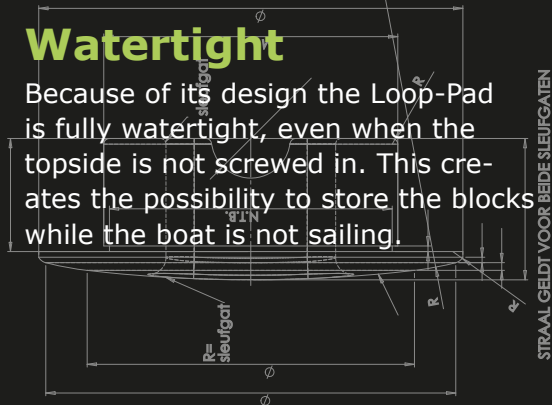
Only two things are needed to install the Loop-Pad: a right-size drill and glue!

Just make sure that the deck is able to hold the loads or ask for a tie-rod attachment on the Loop-Pad to divert the load to the bulkheads or hull.

Spacer rings are used to fill up the space under deck to ensure that the topside is lying flat on the deck.

Watertight

Because of its design the Loop-Pad is fully watertight, even when the topside is not screwed in. This creates the possibility to store the blocks while the boat is not sailing.



High breaking strength

The Loop-Pad is made to meet high static and dynamic loads. The compact design features an aluminum casing with a high-tensile stainless steel locking pin.

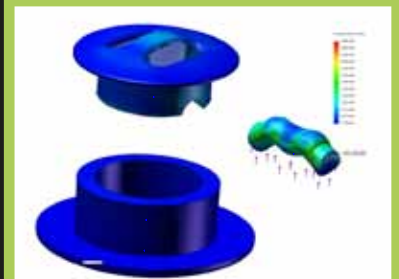
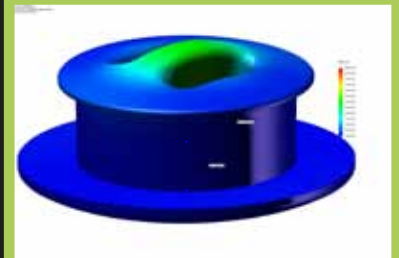
All strengths are calculated using Finite Element Analysis. Although the loop (and the block attached) will fail before the Loop-Pad reaches the critical load zone, the Loop-Pad is designed to break at the topside, ensuring the integrity of deck and hull in case of severe overloading and consequent failure.



Exchangeable and detachable loops

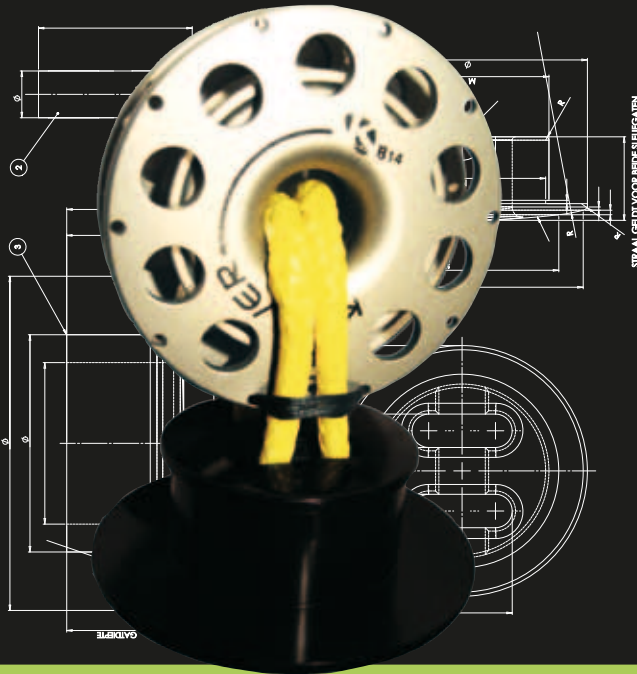
The key to the design is the possibility to exchange the loops and blocks without adding more shackles or other links. All types of loop-blocks can be attached directly to the Loop-Pad. This means that the blocks will stay close to the deck.

The loops for the Loop-Pad are made of pre-stretched and coated Dyneema SK75. They are tested to match the safe working loads and fit exactly.



Customized designs at request

- multiple block attachments for mast bases
- tie-rod attachment
- alternative screw-in options e.g. bulls-eyes, cleats, stay fittings etcetera
- custom design for narrow spaces below deck
- anodizing or powder coating in various colors



LOP
PAD
by
TUNED
RIGS & ROPES

TUNED Rigs & Ropes
Havenweg 9
1601 GA Enkhuizen
Netherlands

Tel +31 228 324 995
Fax +31 228 324 998

info@tunedrigs.com
www.tunedrigs.com

Technical details

Size Loop-Pad	S.W.L Loop-Pad	Weight Loop-Pad	Diameter (drill)	Size Loop	S.W.L. Loop	Weight Loop
Size I	2.000 kg.	150 gr.	40 mm	Size I	1.700 kg.	12 gr.
Size II	4.000 kg.	225 gr.	50 mm	Size II	3.500 kg.	24 gr.
Size III	6.000 kg.	350 gr.	65 mm.	Size III	5.500 kg.	32 gr.

All measurements are preliminary, please contact us for the exact specifications.